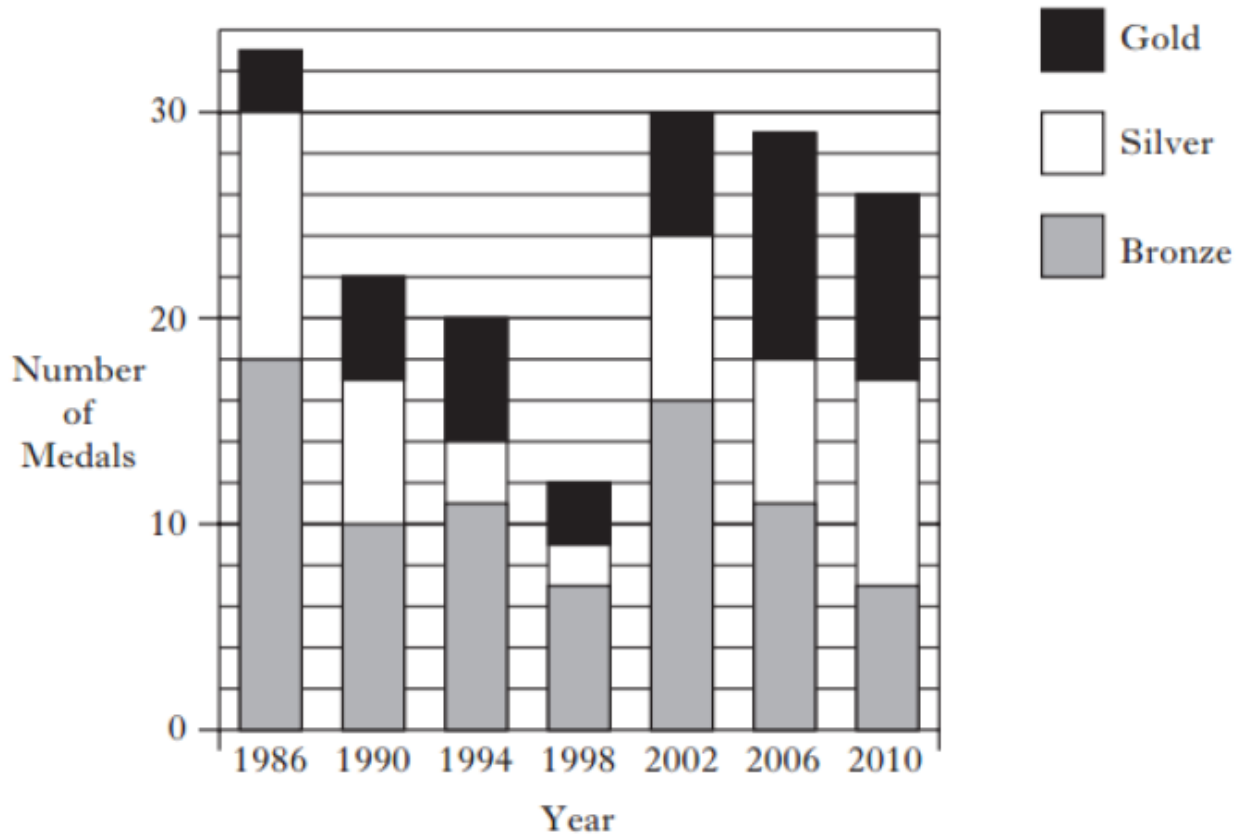


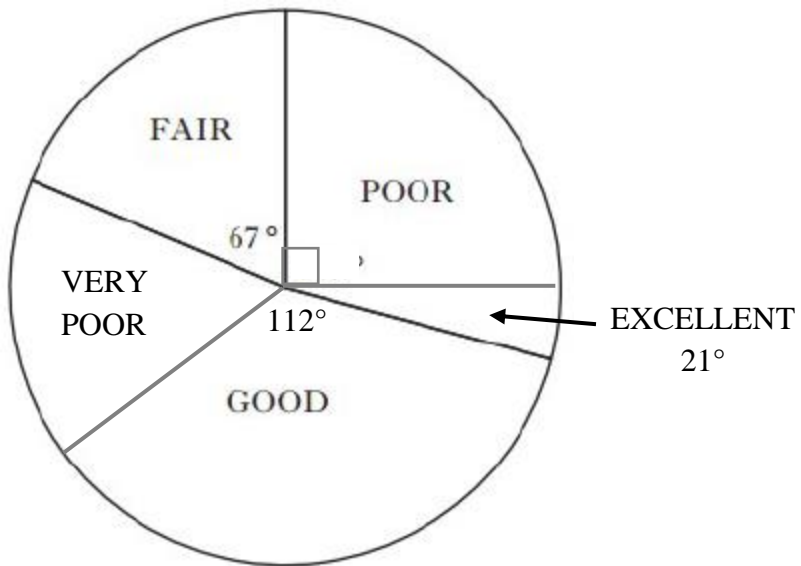
1. The Bar Graph below shows the number of medals won by Scotland at the Commonwealth Games between 1983 and 2010



- How many Silver medals did Scotland win in 2002? (1)
- In which years did Scotland win the same number of Gold medals? (1)
- In total, including 2014, Scotland won 196 medals.  
How many medals did they win in 2014? (2)
- Express the number of medals won in 2014 as a percentage of the total number of medals won between 1986 and 2014.  
Give your answer correct to 3 significant figures. (2)

2. A mobile phone company monitors its customer reviews on the review website Trust.com. The pie chart shows the responses gathered over the year from 3780 customers.

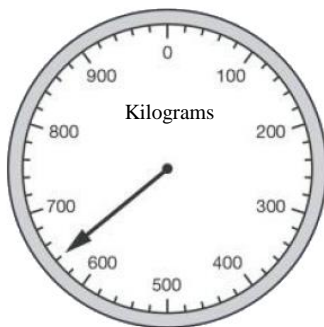
How many customers selected VERY POOR as their review?



3. Here are some facts about the Commonwealth Games held in Glasgow in 2014:

- a) For the closing ceremony there were 3 prices for tickets; £180, £105 and £75. Write this as a ratio in its simplest form from cheapest to most expensive. (2)
- b) The total sales of tickets for the closing ceremony was £2977500. If they sold 7500 of the middle priced tickets, express this figure as a percentage of the total sales correct to 2 decimal places. (3)
- c) A ticket tout bought 12 expensive tickets, 50 middle priced tickets and 104 cheap tickets. He then sold them at the following prices; £240, £140 and £100. Calculate how much profit the tout made selling the tickets? (3)

d)



This scale shows the combined weight of the Scottish Rugby Sevens team.

How heavy was each player correct to 2 decimal places. (2)

- e) At the refreshment kiosk at the Rugby Sevens they were selling 3 sizes of drinks as shown.

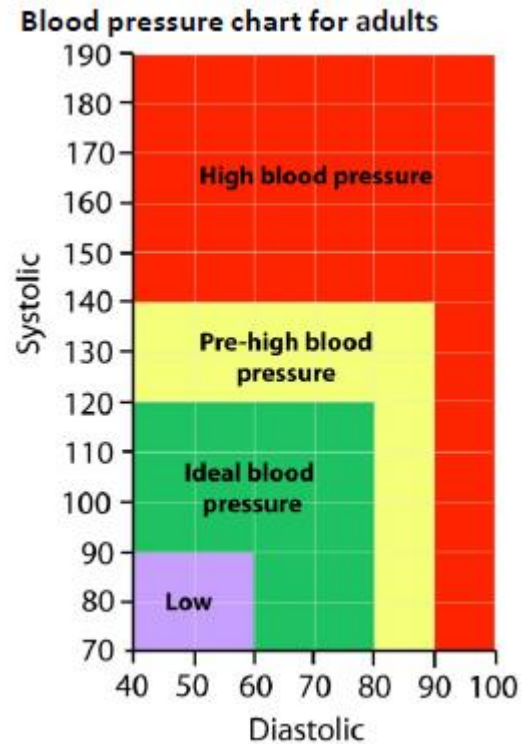
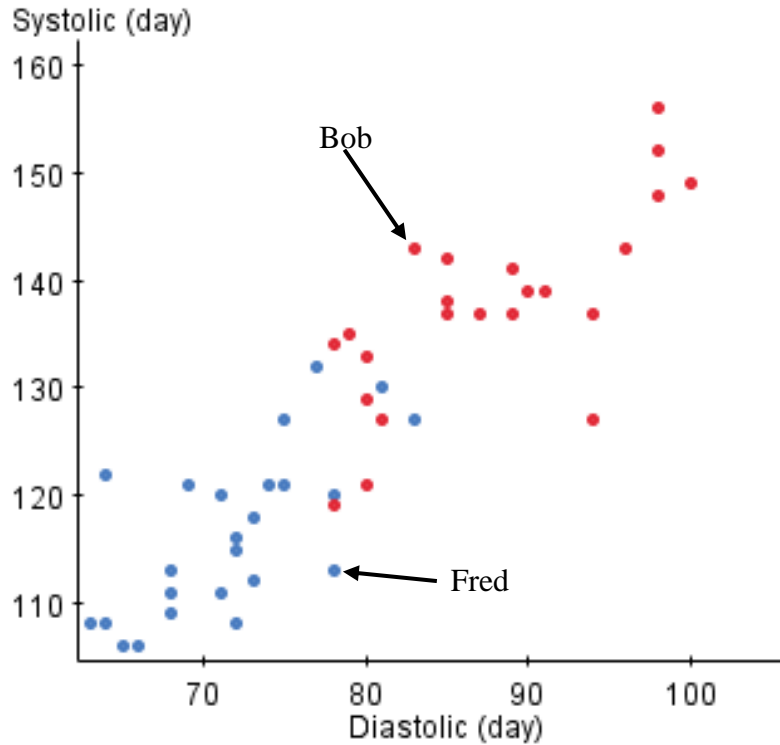
Which drink provides the best value for money? Explain your answer fully.



250ml £1.25  
500ml £2.35  
675ml £3.45

(4)

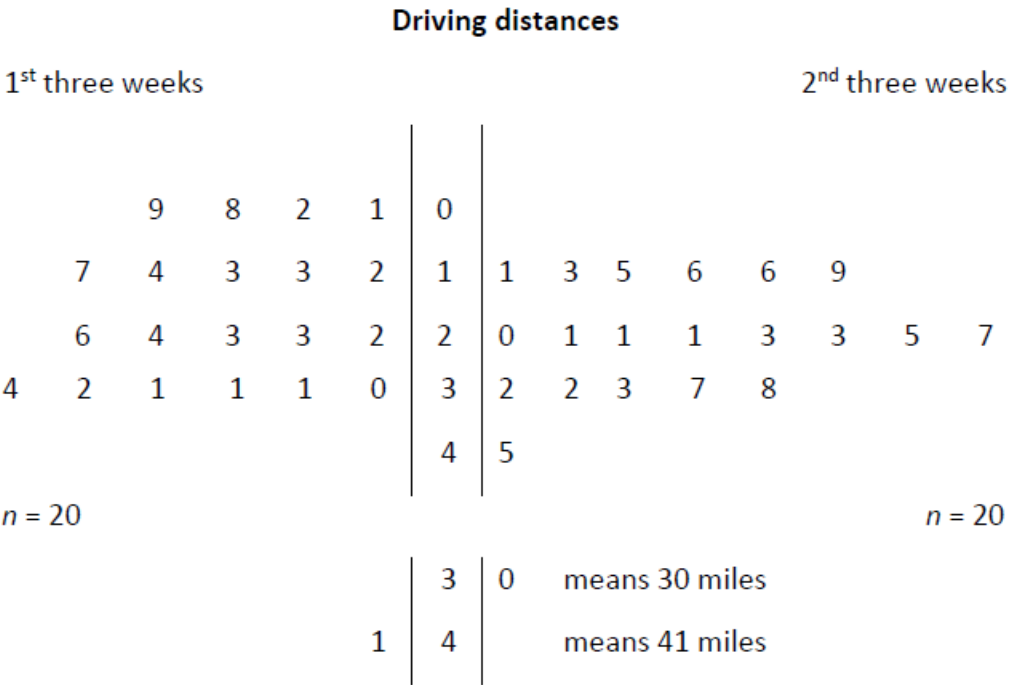
4. The scattergraph below shows the 2 readings that make up your Blood Pressure, Systolic (pressure when your heart beats) and Diastolic (pressure between heart beats).



- Describe the correlation between the Systolic and Diastolic pressures in the scattergraph above. (1)
- Bob's Blood Pressure is said to be 142 over 83, in the same way write an estimate for Fred's Blood Pressure. (2)
- The chart above on the right is used to categorise Blood Pressure.
  - Which category is Bob in? (1)
  - Which category is Fred in? (1)
  - Who do you think is more likely to have heart problems in the future? (1)

5. Before buying a car, Lee recorded how far she drove in six weeks on a daily basis.

The back to back stem and leaf diagram below shows how far Lee drove each day in the first three weeks, and second three weeks.



- a)

What was the shortest distance Lee drove in the first 3 weeks?

(1)
- b)

What was the furthest Lee drove in the second 3 weeks?

(1)
- c)

The mean distance travelled in the first 3 weeks was 19.8 miles.  
Lee thinks that she drove further in the second 3 weeks than the first 3 weeks  
By comparing the means state whether or not Lee is correct. Explain your answer fully.

(3)
- d)

If the increase continues for the next 3 weeks, on average how far will Lee drive in the third 3 week period?

(1)

6. The 2 spinners shown here are used in a game:

- a) What is the probability of rolling a 2 on the **YELLOW** spinner?
- b) What is the probability of rolling a 5 on the **RED** spinner?



Yellow Spinner



Red Spinner

- c) Copy and complete the table below to list all the possible number combinations if both spinners are spun in a similar way each time:

		Red Spinner					
		1	2	3	4	5	6
Yellow Spinner	1	2					
	2			5			
	3					8	
	4						
	5				9		

- d) What is the probability of getting 9 if both spinners are used?
- e) If the spinners are used 72 times, approximately how many times will you score a total of 6?

**Total Marks: 40**